

# AI 12X Pro Bullet Network Camera



IP67

AF Lens



## DATASHEET

## KEY FEATURES

- ▶ Smart IR II (Combining the High Beam and Low Beam to adjust IR intensity to fit different lighting conditions.)
- ▶ HLC (High Light Compensation. Improving image visibility under strong light sources.)
- ▶ Defog (Defog technology. Restoring clear images in hazy and foggy weather.)
- ▶ Integrated Cable Management (Combining the power interface, PoE port, and other interfaces in the base neatly.)
- ▶ 256G (Supporting ultra-large external microSD/SDHC/SDXC card storage up to 256G.)
- ▶ Smart Stream (Bandwidth, storage and bit rate are saved with Smart Stream On, eg, H.265<sup>+</sup> saves 70%~80% bandwidth that of H.264.)

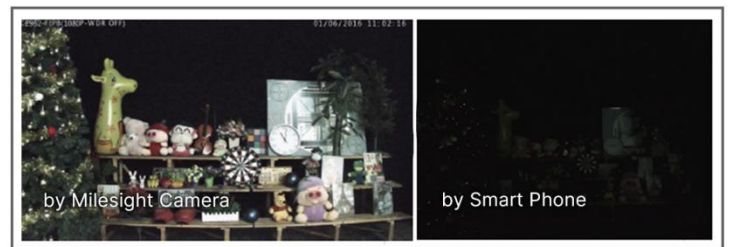
## AI Video Analytics

- 8 intelligent VCA modes powered by AI engine, which can intelligently filter objects to focus on human and vehicle detection.
- People Counting technology provides high accuracy and real-time data based on AI algorithm with statistic reports.
- Face Detection function detects human faces in the monitoring scene and captures the snapshots, which greatly enhances the monitoring efficiency.



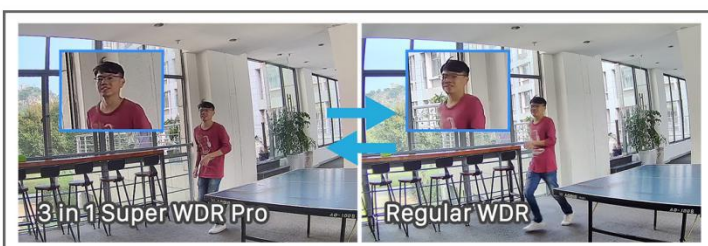
## 0.002Lux Ultra Low-light

The starlight camera is able to deliver high detailed color images even in low light environment reaching 0.002Lux(Color) or 0Lux(B/W), and near infrared light environments without any supplementary lighting.



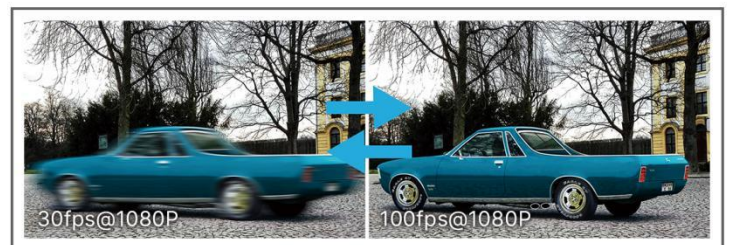
## 3 in 1 Super WDR Pro - 140dB

Milesight upgraded 3 in 1 Super WDR Pro outputs three frames each line, which is able to bring more details especially moving subjects. What's more, it greatly improves image quality for reducing smear and noisy points. The ratio that the brightest light signal values divided by the darkest light signal values is up to 140dB.



## 100fps

With the industry leading frame rate reaching 100fps, the cameras can easily catch images with no latency despite of the high-speed movement, which is the best choice for the demanding requirements especially for intelligent cameras.



# AI 12X Pro Bullet Network Camera



| Camera    | Model                 | MS-C2962-R(T)EPC<br>(2MP)                                                                                                                                                                                                | MS-C5362-EPC<br>(5MP)                                                                                                                                                                                |
|-----------|-----------------------|--------------------------------------------------------------------------------------------------------------------------------------------------------------------------------------------------------------------------|------------------------------------------------------------------------------------------------------------------------------------------------------------------------------------------------------|
|           | Image Sensor          | 1/2.8" Progressive Scan CMOS                                                                                                                                                                                             |                                                                                                                                                                                                      |
|           | Min. Illumination     | Color: 0.002Lux@F1.2<br>Color: 0.005Lux@F1.6<br>B/W: 0Lux with IR on                                                                                                                                                     | Color: 0.005Lux@F1.2<br>Color: 0.008Lux@F1.6<br>B/W: 0Lux with IR on                                                                                                                                 |
|           | WDR                   | 140dB Super WDR<br>(Super WDR Pro is optional for T Series)                                                                                                                                                              | 120dB Super WDR                                                                                                                                                                                      |
|           | Shutter Time          | 1/100000s~1s                                                                                                                                                                                                             |                                                                                                                                                                                                      |
|           | IR Distance           | Up to 120m                                                                                                                                                                                                               |                                                                                                                                                                                                      |
|           | Day/Night Mode        | Day/Night/Auto/Customize/Schedule                                                                                                                                                                                        |                                                                                                                                                                                                      |
|           | S/N                   | >55dB                                                                                                                                                                                                                    |                                                                                                                                                                                                      |
| Lens      | Lens                  | 5.3~64mm, 12X Optical Zoom                                                                                                                                                                                               |                                                                                                                                                                                                      |
|           | Field of View         | H61°~H5°/D69°~D5°/V36°~V2°                                                                                                                                                                                               | H57°~H4°/D69°~D5°/V44°~V1°                                                                                                                                                                           |
|           | Mount                 | Φ14                                                                                                                                                                                                                      |                                                                                                                                                                                                      |
|           | Focus Control         | Auto/Manual                                                                                                                                                                                                              |                                                                                                                                                                                                      |
|           | Aperture              | F1.6~F2.8                                                                                                                                                                                                                |                                                                                                                                                                                                      |
|           | Iris Control          | Auto                                                                                                                                                                                                                     |                                                                                                                                                                                                      |
| Video     | Max. Image Resolution | 1920x1080                                                                                                                                                                                                                | 2592x1944                                                                                                                                                                                            |
|           | Primary Stream        | 60Hz: <b>100fps@(1920x1080)(Optional for T Series)</b> ,<br>60fps@(1920x1080, 1280x960, 1280x720, 704x576)<br>50Hz: <b>100fps@(1920x1080)(Optional for T Series)</b> ,<br>50fps@(1920x1080, 1280x960, 1280x720, 704x576) | 60Hz: 30fps@(2592x1944),<br>45fps@(2048x1536), 60fps@(1920x1080, 1280x960,<br>1280x720, 704x576)<br>50Hz: 25fps@(2592x1944),<br>45fps@(2048x1536), 50fps@(1920x1080, 1280x960,<br>1280x720, 704x576) |
|           | Secondary Stream      | 60Hz: 30fps@(704x576, 640x480, 640x360, 352x288, 320x240, 320x192, 320x180)<br>50Hz: 25fps@(704x576, 640x480, 640x360, 352x288, 320x240, 320x192, 320x180)                                                               |                                                                                                                                                                                                      |
|           | Tertiary Stream       | 60Hz: 30fps@(1920x1080, 1280x720, 704x576, 640x480, 640x360, 320x240, 320x192, 320x180)<br>50Hz: 25fps@(1920x1080, 1280x720, 704x576, 640x480, 640x360, 320x240, 320x192, 320x180)                                       |                                                                                                                                                                                                      |
|           | Video Compression     | H.265+/H.265(HEVC)/H.264+/H.264/MJPEG                                                                                                                                                                                    |                                                                                                                                                                                                      |
|           | Video Bit Rate        | 16Kbps~16Mbps(CBR/VBR Adjustable)                                                                                                                                                                                        |                                                                                                                                                                                                      |
|           | Privacy Masking       | Up to 24 areas                                                                                                                                                                                                           |                                                                                                                                                                                                      |
|           | ROI                   | Up to 8 areas                                                                                                                                                                                                            |                                                                                                                                                                                                      |
|           | Image Setting         | Brightness/Contrast/Saturation/Sharpness                                                                                                                                                                                 |                                                                                                                                                                                                      |
|           |                       |                                                                                                                                                                                                                          |                                                                                                                                                                                                      |
| Interface | Ethernet              | 1*RJ45 10M/100M Ethernet Port                                                                                                                                                                                            |                                                                                                                                                                                                      |
|           | Audio I/O             | 1/1                                                                                                                                                                                                                      |                                                                                                                                                                                                      |
|           | Alarm I/O             | 1/1                                                                                                                                                                                                                      |                                                                                                                                                                                                      |
| Network   | Network Storage       | NAS(Support NFS, SMB/CIFS), ANR                                                                                                                                                                                          |                                                                                                                                                                                                      |
|           | Protocol              | IPv4/IPv6, ARP, TCP, UDP, RTCP, RTP, RTSP, RTMP, HTTP, HTTPS, DNS, DDNS, DHCP, FTP, NTP, SMTP, SNMP, UPnP, Bonjour, SIP, PPPoE, VLAN, 802.1x, QoS, IGMP, ICMP, SSL                                                       |                                                                                                                                                                                                      |
| Audio     | Audio Compression     | G.711/AAC/G.722/G.726                                                                                                                                                                                                    |                                                                                                                                                                                                      |
|           | Audio Sampling Rate   | 8/16/32/44.1/48KHz                                                                                                                                                                                                       |                                                                                                                                                                                                      |
|           | Audio Bit Rate        | 16~256kbps                                                                                                                                                                                                               |                                                                                                                                                                                                      |
|           | Two-way Audio         | Support                                                                                                                                                                                                                  |                                                                                                                                                                                                      |

# AI 12X Pro Bullet Network Camera



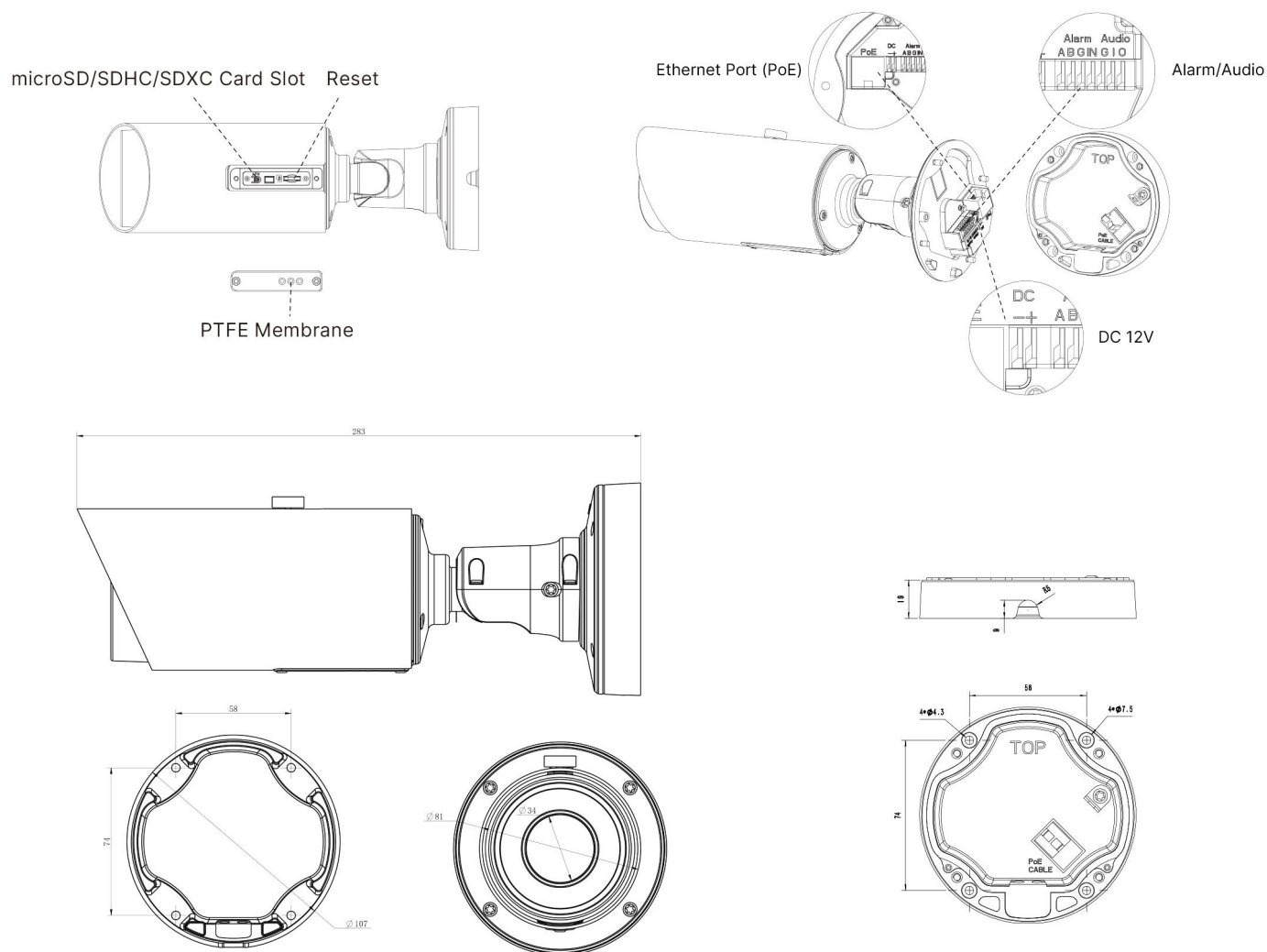
|                              |                         |                                                                                                                                     |
|------------------------------|-------------------------|-------------------------------------------------------------------------------------------------------------------------------------|
| <b>Intelligent Analytics</b> | Video Analysis          | Region Entrance, Region Exiting, Advanced Motion Detection, Tamper Detection, Line Crossing, Loitering, Object Left, Object Removed |
|                              | Face detection          | Detect and capture faces, get real-time snapshots                                                                                   |
|                              | People Counting& Report | Count the number of people entering or exiting, Up to 4 detection areas for regional people counting                                |
| <b>System</b>                | Storage                 | Support microSD/SDHC/SDXC Card Local Storage, up to 256G                                                                            |
|                              | Advanced Function       | Heat Map, BLC, HLC, 2D DNR, 3D DNR, Defog, AWB, EIS, IP Address Filtering, AGC, Anti-flicker, Corridor Mode, Deblur, Watermark      |
|                              | SIP/VoIP Support        | Yes, Voice & Video-over-IP                                                                                                          |
|                              | Event Trigger           | Motion Detection, Network Disconnection, External Input, Audio Alarm, etc.                                                          |
|                              | Event Action            | FTP Upload, SMTP Upload, SD Card Record, External Output, SIP Phone, HTTP Notification, etc                                         |
|                              | System Compatibility    | ONVIF Profile G & Q & S & T, API                                                                                                    |
| <b>General</b>               | Working Temperature     | -40°C~60°C                                                                                                                          |
|                              | Working Humidity        | 0~90%(Non-condensing)                                                                                                               |
|                              | Power Supply            | PoE (802.3af) / DC 12V±10%                                                                                                          |
|                              | Power Consumption       | 6W MAX<br>10W MAX (With IR on)                                                                                                      |
|                              | Weather Proof           | Up to IP67-rated for Weather-resistant Performance                                                                                  |
|                              | Weight                  | 1080g                                                                                                                               |
|                              | Dimensions              | 134mmX126mmX285mm                                                                                                                   |
|                              | Warranty                | 3/5 Years                                                                                                                           |



# AI 12X Pro Bullet Network Camera



## Structure Diagrams



Units: mm

## Accessories Support

### A01 Pole Mount

Weight: 720g  
Dimensions: 170\*51.5\*152.6mm



### A03 External Corner Bracket

Weight: 900g  
Dimensions: 170\*152.5\*76.3mm



### A62 Junction Box

Weight: 510g  
Dimensions: 134\*126\*40mm



Milesight Technology Co., Ltd. | [www.milesight.com](http://www.milesight.com)

Contact Us: [sales@milesight.com](mailto:sales@milesight.com) [support@milesight.com](mailto:support@milesight.com)

Add: 220 NE 51st Street, Oakland  
Park, Florida 33334, USA  
Tel: +1-800-561-0485

Add: 925, Anyang SK V1 Center, LS-ro  
116beon-gil, Dongan-gu, Anyang-si, Korea  
Tel: +82-31-990-7732

Add: No.23 Wanghai Road,  
2nd Software Park, Xiamen, China  
Tel: +86-592-5922772

